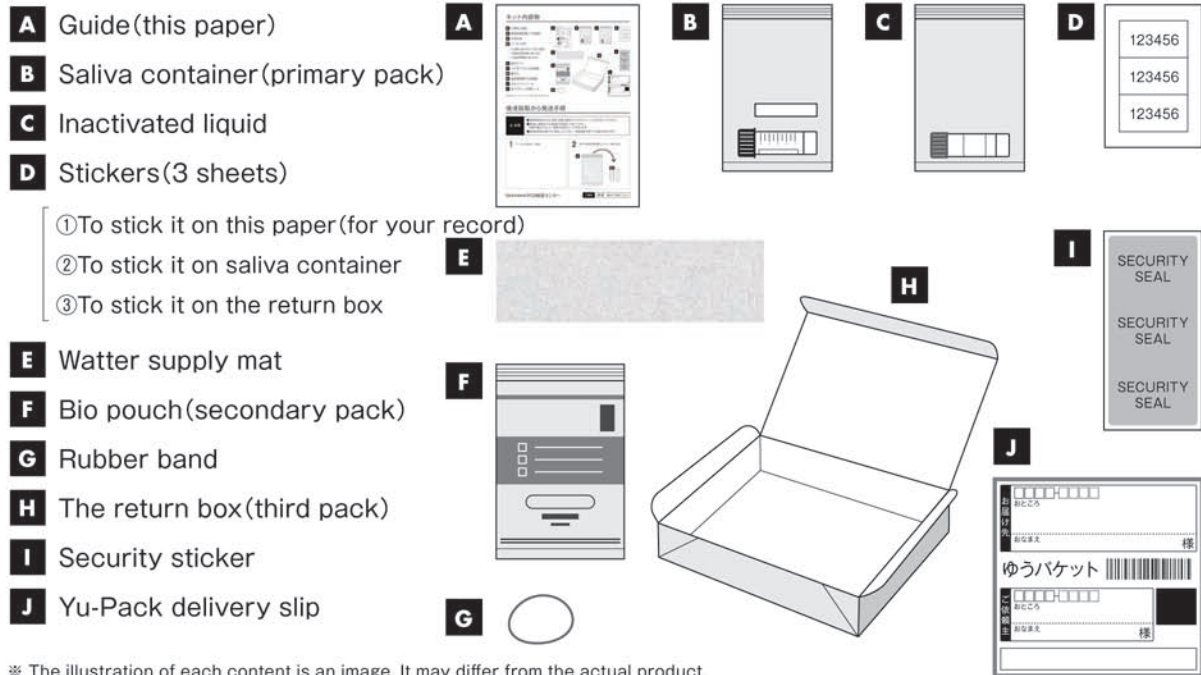


Test kit contents



The shipping method from taking a saliva sample

⚠
attention

- Don't eat, drink, smoke, brush your teeth (mouthwash) 30 minutes before taking a saliva sample.
- Please use the red line (1.5ml) as a guide to put saliva in the container.
If the amount of saliva is low, the test may not be possible.
- Please send this test kit as soon as possible after took a saliva sample.
Because inspection accuracy may decrease.

1 Stick a sticker (for your record)

2 Take the saliva container and straw out from the bag.

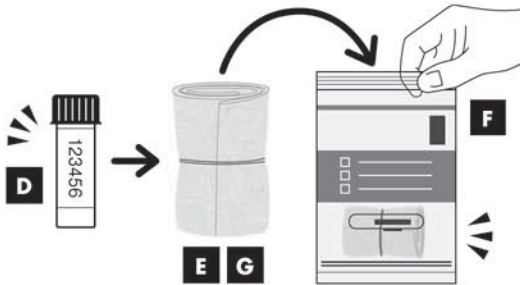
3 Open the cap and use a straw to collect your saliva. (1.5ml scale guide)



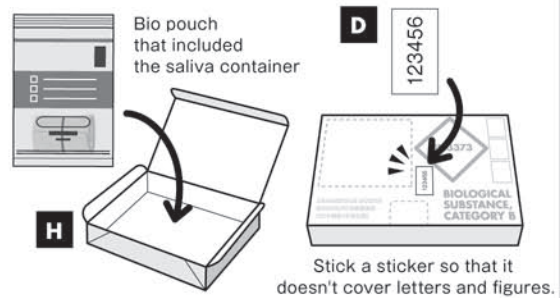
4 Put the inactivate liquid in the saliva container, and close the cap tightly.



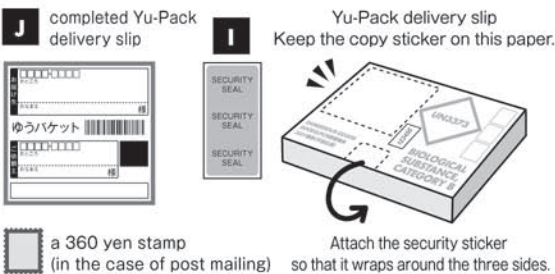
5 Stick a bar code sticker on the saliva container, and wrap it with a water supply mat. Then fasten it with rubber band. Put it in the Bio pouch, and close the bag tightly.



6 Put a bar code sticker and the Bio pouch that included the saliva container in the return box. Please put a sticker on the margin of the box lid.



7 Fill in the Yu-Pack delivery slip and stick it on the box. Remove a sticker for your record. Sticker the box with security sticker and ship it from the post office.
 ※ You can post it to the mailbox by pasting a 360 yen stamp. In this case, the stamp fee of 360 yen will be self-preserving.



△ Check again before wrapping the box.

- Did you forget to put the sticker?
 ※ One sticker is attached to this paper and kept.
- Is there any omission in the Yu-Pack delivery slip?
- Did you remove the copy sticker on the Yu-Pack delivery slip?
 ※ Attach to this paper and keep it

Yu-Pack destination

〒700-0011 岡山県岡山市北区学南町2-4-77
OKAYAMA PCR検査センター

※ We don't accept a direct sample collection to stores, testing centers, or clinics.

Yu-Pack delivery slip copy sticker pasting column